

TIMEX® INSTRUCTIONS

SPECIAL EXTENDED WARRANTY OFFER

5 YEARS FOR 5 DOLLARS

For \$5, Timex will extend the enclosed one year limited manufacturer's warranty for an additional 4 years from date of purchase. This 5 year warranty covers repairs on your watch under the same terms and conditions as set forth in the manufacturer's warranty in this booklet.


Payment can be made with AMEX, Discover, Visa or MasterCard by calling 1-800-448-4639 during normal working hours or you can mail a check to: Timex Extended Warranty
P.O. Box 1676, Dept. EF
Little Rock, AR 72203.

We will need your name, address, telephone number, date watch purchased and 5 digit watch model number.

Payment must be made within 30 days after date of purchase.

Please read this booklet carefully to familiarize yourself with the operation of your Timex watch and with the Limited Warranty.

SECTION 1 – WATER-RESISTANCE

If your watch is water-resistant, it will be indicated () on the watch face or on the caseback.

- **30 Meter Water-Resistant** watch withstands water pressure to 60 p.s.i.a. (equals immersion to 98 feet or 30 meters below sea level).
- **50 Meter Water-Resistant** watch withstands water pressure to 86 p.s.i.a. (equals immersion to 164 feet or 50 meters below sea level).
- **100 Meter Water-Resistant** watch withstands water pressure to 160 p.s.i.a. (equals immersion to 328 feet or 100 meters below sea level).

WARNING: TO MAINTAIN WATER-RESISTANCE, DO NOT PRESS ANY BUTTONS OR PULL OUT THE CROWN UNDER WATER UNLESS YOUR WATCH IS INDICATED AS 200 METER WATER-RESISTANT.

NOTES:

1. The watch is water-resistant only as long as crystal, crown and case remain intact.
2. Even though the watch may be water-resistant to a significant depth (100 or 200 meters), it is not a diver watch and should not be used for diving.
3. **CROWN MUST BE SCREWED INTO THE CASE PROTRUSION TO ASSURE WATER-RESISTANCE.**
4. Timex strongly recommends rinsing your watch with fresh water after exposure to salt water.

SECTION 2 – HOW TO START YOUR WATCH

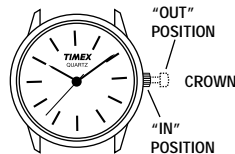
To start your watch, remove the plastic guard from under the crown then push the crown in as far as it will go against the case to the "IN" position. The second hand should now advance at one second intervals.

SECTION 3 – HOW TO SET THE TIME

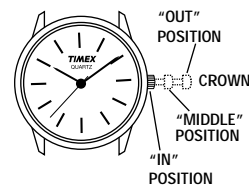
If your watch has a day of the week and date, first set the day of the week (see Section 4). If your watch has a date only, set the date first (see Section 5).

Timex watches either have a two-position or three-position setting crown as illustrated below.

2 POSITION CROWN



3 POSITION CROWN



To set the time, pull the crown to the "OUT" position of your watch. Slowly rotate the crown clockwise or counterclockwise to the desired time. Push the crown to the "IN" position to restart the watch.

SECTION 4 – HOW TO SET THE DAY OF THE WEEK

There are two types of Day/Date watches. The day is set either in the "MIDDLE" crown position or in the "OUT" position. To determine which version you have, pull the crown to the "MIDDLE" position and slowly rotate the crown counterclockwise.



If the day changes, continue to rotate the crown until you reach the desired day. Then follow the instructions in Section 5 for setting the date.

If the day does not change when the crown is rotated in the "MIDDLE" position, pull the crown to the "OUT" position and proceed to slowly rotate the crown clockwise or counterclockwise through the necessary number of 24 hour periods to advance to the desired day. Then follow the instructions in Section 5 for setting the date.



SETTING THE DATE ON TYPE B

Pull the crown to the "OUT" position and rotate the hands slowly **CLOCKWISE** or **COUNTERCLOCKWISE** through 24 hours until the desired date appears in the window.

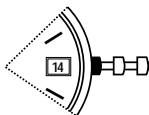


Once set, the date will have to be advanced in this manner on five occasions during the year (the five months that have fewer than 31 days).

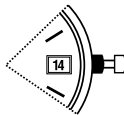
SECTION 5 – HOW TO SET THE DATE

There are two types of Date watches. Identify the type you have from the illustrations below, then follow the appropriate instructions for setting.

TYPE A
3 POSITION CROWN



TYPE B
2 POSITION CROWN



SETTING THE DATE ON TYPE A

There are two versions on the date setting of a Type A watch. In both versions, the crown is first put in the "MIDDLE" position.



In one version, the crown is rotated slowly **COUNTERCLOCKWISE** only; in the other version, the crown is rotated slowly **CLOCKWISE**. Stop when the desired date appears.

SECTION 6 – ELAPSED TIME RING

If your watch is equipped with a rotatable outer dial with numbers and indicators, this Elapsed Time Ring may be used to indicate the length of time remaining for an activity or the starting time of an activity.

TIME REMAINING – set the outer ring so that the triangle is pointing to the time the activity is to end.

STARTING TIME – set the triangle on the time the activity is to begin.

SECTION 7 – BATTERY REPLACEMENT

One battery provides the power to operate your Timex watch. **TIMEX STRONGLY RECOMMENDS TAKING YOUR WATCH TO A LOCAL RETAILER OR JEWELER TO HAVE THE BATTERY REPLACED.** The battery type required for your watch is indicated on the caseback.

CAUTION: DO NOT DISPOSE OF OLD BATTERY IN FIRE OR ATTEMPT TO RECHARGE. KEEP LOOSE BATTERIES AWAY FROM CHILDREN.

SECTION 8 – BAND ADJUSTMENT

If your watch has a band similar to the photo, follow these instructions to adjust the band since the clasp can be damaged if excessive force is used.



1. Open locking plate as shown using nail file, small screwdriver or other blunt instrument.
2. Move clasp to desired band length.
3. While holding the locking plate with your finger and thumb, exert slight pressure and slide the clasp back and forth until you feel the clasp engage in one of the grooves on the underside of the band.
4. Firmly press the locking plate down until it snaps to closed position. If it seems to be difficult to push closed, repeat Step 3 to ensure that you have properly positioned the clasp.

SECTION 9 – SERVICE

If your TIMEX watch should ever need servicing, send it to Timex addressed as follows:

HOTLINE WATCH SERVICE
P.O. Box 2740
Little Rock, AR 72203

For service questions, call 1-800-448-4639.

For your convenience in obtaining factory service, participating Timex Retailers can provide you with a pre-addressed Watch Repair Mailer.

See the Limited Warranty for specific instructions on the care and service of your Timex watch.

Should you need a replacement strap or band, call 1-800-448-4639.

LIMITED WARRANTY

The Basic Coverage: This TIMEX Quartz Analog watch (but not any battery, crystal, band or strap) is warranted to the owner for a period of **ONE YEAR** from the date of purchase against defects in manufacture by Timex Corporation - not by the dealer from whom the watch was purchased.

What Timex Will Do: If this watch develops such a defect within the one year period, it will be repaired (i.e., a new or thoroughly reconditioned and inspected movement will be installed) or replaced (a watch of equal value and similar appearance will be supplied) at our option, provided it is returned with a \$5.00 check or money order to cover costs of postage, handling and service, and you provide proof of purchase and date of purchase.

This Limited Warranty Does Not Cover:

- 1) Timex will not repair defects related to servicing not performed by Timex Corporation.
- 2) Timex will not provide any warranty service if your watch shows evidence that it has been tampered with, misused, abused, or altered; for example:
 - moisture damage sufficient to affect the proper function of the watch;
 - damage to the case; or
 - visible cracking of the crystal.
- 3) Timex reserves the right to charge you for a replacement battery, if the battery in your watch is depleted. No additional charge will be made unless the one year warranty period has expired or servicing is necessary for reasons beyond our control, in which case a moderate charge will be made.
- 4) TIMEX IS NOT LIABLE FOR INCIDENTAL, SPECIAL OR CONSEQUENTIAL DAMAGES. Some states do not allow the exclusion or limitation of incidental, special or consequential damages, so the above exclusion or limitation may not apply to you.

Your Rights Under Implied Warranties and State Law: THIS LIMITED WARRANTY IS IN LIEU OF ALL OTHER EXPRESSED WARRANTIES, OBLIGATIONS OR LIABILITIES. TIMEX LIMITS THE DURATION OF ANY WARRANTY IMPLIED BY STATE LAW, INCLUDING BUT NOT LIMITED TO THE IMPLIED WARRANTIES OF MERCHANTABILITY AND FITNESS FOR A PARTICULAR PURPOSE, TO ONE YEAR FROM THE DATE OF ORIGINAL PURCHASE. Some states do not allow limitations on how long an implied warranty lasts, so the above limitation may not apply to you. This warranty gives you specific legal rights, and you may also have other rights which vary from state to state.

Care of Your Watch:

- Avoid exposing your watch to water, steam, or other forms of moisture if it is non-water-resistant.
- If the crystal becomes damaged, have it replaced at once to avoid damage to the movement.
- When your battery is depleted, have it replaced promptly. The particular type of battery required is indicated on your caseback. You can get them from your local Timex retailer.

Service of Your Watch:

If your TIMEX watch should ever need servicing, send it to Timex addressed as follows: **HOTLINE WATCH SERVICE, P.O. Box 2740, Little Rock, AR 72203**

Because of possible loss, we recommend insuring your watch, return receipt requested, when using the mails. If you do not obtain a receipt within a reasonable time, start a tracer through the originating post office. NEVER INCLUDE A SPECIAL WATCHBAND OR ANY OTHER ARTICLE OF PERSONAL VALUE IN YOUR SHIPMENT. PLEASE NOTE THAT WE MAY SUBSTITUTE A WATCH OF EQUAL VALUE AND SIMILAR APPEARANCE FOR YOURS ON BOTH IN-WARRANTY AND OUT-OF-WARRANTY REPAIRS.

For your convenience in obtaining factory service, participating Timex retailers will be pleased to provide you with a postage-paid, pre-addressed Watch Repair Mailer.

TIMEX is a trademark and a service mark of Timex Corporation.

REG. U.S. PAT. & TM. OFF.